

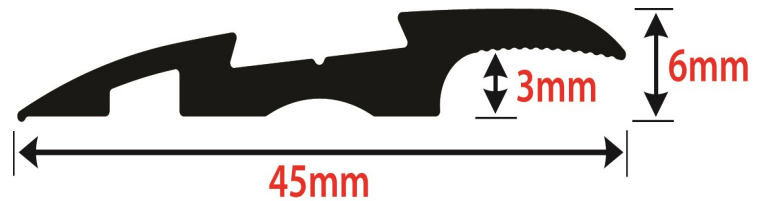
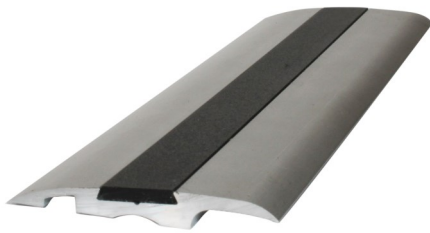


Gilt Edge Industries Ltd®

Customer Services  
CHC : 03 379 7067 or AKL: 09 443 7067  
Email: help@giltedge.co.nz

Technical & Sales Assistance  
Email: sales@giltedge.co.nz  
www.giltedge.co.nz

## PRODUCT DATA SHEET



### 3754 Silver Alloy Carpet Reducer

A floor trim designed to provide a ramp transition from carpet to floor / substrate. Includes an anti slip PVC insert in a range of speciality colours.

### Product Attributes

Floor finishing trim strip for carpet to vinyl/rubber/timber/concrete height transitions.

Material: Aluminium      Colour: Satin Silver Anodised      Length: 2.44mtr

### Specification

Where noted in the specification and/or schedule of finishes install Silver Alloy carpet reducer (colour as specified).

Suitable for interior or exterior use. 1 x 12mm non-slip insert. Suitable for 3mm height variations.

Colour : refer colour insert chart: [http://www.giltedge.co.nz/product\\_detail.asp?cid=57&item=1598](http://www.giltedge.co.nz/product_detail.asp?cid=57&item=1598)

### Installation

- 1) it should be ensured that all surfaces to which the profile is to be fixed are dry, flat and free from any contaminants.
- 2) Cut the profile to the size required.
- 3) Place the profile in position and mark the position of the screw holes onto the substrate.
- 4) Drill the substrate to a depth of 30 -35mm and insert suitable fixing plugs into the holes.

Apply high performance cartridge adhesive MS Safe Fix to the back of the profile and place onto the substrate. Ensure that all of the profile is in contact with the substrate and there is a minimum 80% coverage of adhesive on the underside of the profile. Please refer to adhesive manufacturers data sheets for application details.

## **Maintenance**

### 1) Preventative Maintenance Programme

A regular scheduled maintenance programme prevents build up of dirt and grease, which will reduce the anti-slip properties of the profile and detract from the overall appearance of the product.

### 2) Daily Cleaning

Brush down the profiles using a soft bristled brush and remove dust particles by wiping with a damp cloth.

### 3) Twice Weekly

Brush down the profiles using a soft bristled brush. With clean warm water, apply a small amount of a soap-less detergent to a wet green scotch pad and gently clean the surface of the profile along it's width. During the clean, the water must be changed on a regular basis. Do not soak the profile. Once the profile has been cleaned thoroughly rinse with fresh, clean water and dry with a dry lint free cloth.

On completion the profile should not be used until completely dry.

## **Aluminium Profiles**

Stubborn marks such as boot blacking may be removed from the aluminium profile by means of a green scotch pad and soap-less detergent. Light surface scratches can be removed with careful use of fine wire wool and buffed with a soft cloth.

13 November 2017